

June 2024

Rebecca Cheetham Nursery and Children's Centre NEWSLETTER



Dear all,

We have had some promise of warmer days ahead but also lots of rain to keep us reminded not to take good weather for granted. Although as we have been focusing on our topic of growth this term, the variety of weather is great for our plants.

PARENT FORUM

Next date: Friday 14th June 2024 9am (face-to-face) and 1pm (face-to-face)

TOPIC: Transitions

We encourage all our parents whose children are leaving us for Reception to attend this Parent Forum focused on how to manage your child's transition to primary school. We will give you helpful tips and strategies to make the move as smooth as possible. Book your place through the front office.

Thank you to all the parents who attended our last Parent Forum on Early Phonics; I really appreciated the questions and conversations. Here are the slides from that session with the disclaimer that this was an information session and there is no expectation that you should be teaching phonics to your children!

<https://www.rebeccacheetham.newham.sch.uk/attachments/download.asp?file=811&type=pdf>

LEADING PARENT PARTNERSHIP AWARD

We are so thrilled to announce that we were granted the Leading Parent Partnership Award on 21st May 2024. Our Assistant Head and SENDCO, Farhana, led the charge, putting together a very impressive evidence file and organising for our staff, parents and even children to speak with the assessor to find out more about the work that goes on at Rebecca Cheetham. I am particularly pleased to get this kind of recognition as working with parents and carers is so important to get right and whilst we can celebrate our successes we are always looking to how we can improve things. We hope that our newly formed Parent Partnership will grow and really bridge the gap between nursery school and home. We look forward to sharing the report with you once finalised.



MUDCHUTE FARM VISIT—THANK YOU!

The children had a wonderful time at Mudchute Farm (see photos further in the newsletter). These educational visits cannot happen without the support of our parents joining us and it really does make for an enjoyable experience for your children to have you there. We do have strict ratios for our visits to ensure we are making the experience the safest we can for your children and we really do appreciate your involvement.

Nursery Opening Times

Extended day
8:00am to 5:00pm
Or
8:00am to 6:00pm

30 Hours
8:45am to 2:45pm

Morning place
8:45am to 11:45pm

Afternoon place
12:45pm to 3:45pm

Charges apply for late collections.

Attendance and Punctuality

We take attendance and punctuality very seriously and it is proven that constant absence can be a major disruption to your child's development.

Research has shown that attending early years education and care can help to improve children's outcomes and narrow the gap associated with socio-economic disadvantage. <http://www.nuffieldfoundation.org/impact-nursery-attendance-childrens-outcomes>

If your child will not be attending nursery, it is essential you contact us

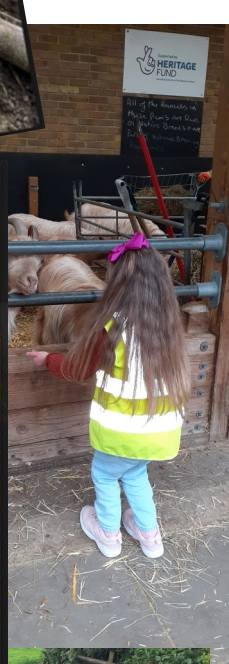


Like us on Facebook



Follow us on Twitter @RCNCC15

Rebecca Cheetham Nursery and Children's Centre
Marcus Street
Stratford
E15 3JT Phone: 0208 534 3136
E-mail: info@rebeccacheetham.newham.sch.uk



The children across all four classes in the nursery had the wonderful opportunity to visit Mudchute Farm in connection with their learning about growth. We are always thankful for all our parent helpers who join us, allowing these visits to take place.

EDUCATIONAL VISIT (OPTIONAL) to LEIGH-ON-SEA

Our annual trip to Leigh-on-Sea is always a popular day out, so much so that we have extended it over three days to try and accommodate all the interest in the visit. This visit is for our 3 & 4 year old children and occurs on the following dates:

Donaldson Room—Tuesday 11th June 2024

Jeffers Room—Wednesday 12th June 2024

Cooke Room—Thursday 13th June 2024

We look forward to spending a day at the seaside with you all and will be hoping for a lovely sunny day!

OPEN AFTERNOON

Don't forget to spread the word regarding our *Open Afternoon* for all prospective new students on **Wednesday 5th June May 2024** between **4pm and 5pm**. This is a perfect opportunity for parents to get a feel of the nursery space, meet some of the staff and understand what they can expect once their child commences their time with us. If you know anyone looking for 2, 3 and 4 year old places, please pass the message on.

FIESTA FUN DAY—CAN YOU HELP?

- If you work for or know anyone that works for a company / organisation that would be happy to make a **donation** or offer a **prize or gift voucher** we would happily receive anything of value that we can offer for our raffle, tombola or general prizes throughout the day.
- If you have any unwanted gifts at home that you are happy to part with, we would love to accept them for our tombola.
- If you have any skills that you could offer in terms of running a stall or an activity for the children, we would love to hear more; you can speak to a member of the Fiesta Fun Day committee.
- Closer to the time we will ask for some donations for a "Nearly New" sale so we will be asking for donations for that in the near future.

Also, don't forget that we are closed on the day of Fiesta Fun Day so we can prepare for the festivities but we look forward to welcoming you for a fun afternoon of laughter, music, creativity, dancing, games and prizes. **Fiesta Fun Day** is on **Friday 28th June 2024** between **1pm to 5pm**.

SPORTS DAY

We look forward to welcoming you on site for our annual Sports Day which we will be holding onsite. The date is **Wednesday June 19th 2024** at **10.30am** or **2.30pm** and we will be hosting a variety of different games and activities to get children (and parents / adults) active and involved in some fun competition. This is a School of Family event so we welcome parents and carers to join us for this event.

World Environment Day

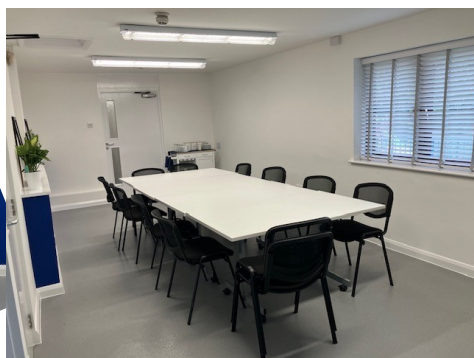
June is a time when we are reminded to take even more care of our wonderful world. World Environment day takes place on **Wednesday 5th June** and the children at Rebecca Cheetham are active environmentalists. They have been learning about sorting and recycling items, looking after the chickens and will be growing their own vegetable for snack time this month.

Thursday 30th June is **Clean Air day**, an opportunity for less car use and more active travel. Did you know that Plaistow New Road (A112) is one of the most polluted roads in Newham? The nursery garden has a wonderful 'green screen' of plant life that separates the garden from the road, serving as a barrier, absorbing pollutants. You can help us to reduce pollution even further by leaving the car at home and walking, cycling or scooting into school.



The children are learning about sustainability and today we wanted to share the learning around economic sustainability; the children went to Tesco to shop for ingredients, they made pizzas and sold them at the end of their session, raising money for items that they will later make a decision on to purchase for the classroom.

We are thrilled with our new training room space which was once our kitchen! The new room is named Adeola Room, after the wonderful illustrator Dapo Adeolo whose books we love here at Rebecca Cheetham Nursery.



Children's Centre

MAY HALF TERM PROGRAMME

	Monday 27 th May 2024	Tuesday 28 th May 2024	Wednesday 29 th May 2024	Thursday 30 th May 2024	Friday 31 st May 2024
AM	Spring Bank Holiday	Family Stay and Play (Transport Play) 0-8 years Rebecca Cheetham Children's Centre Booking required 10:00am - 11:30am	Family Stay and Play (We're Going on a Bear Hunt) 0-4 years Rebecca Cheetham Children's Centre Booking required 10:00am - 11:30am	Baby Stay and Play (Baby Sensory) 0-12 months and non- walkers Rebecca Cheetham Children's Centre Booking required 10:00am - 11:30am	Thames Barrier Park visit & Picnic (Bring a healthy packed lunch) 2-8 years Limited Buggy spaces Booking Required 10:00am - 2:00pm
PM		Family Stay and Play (Quality time together) Whole family Rebecca Cheetham Children's Centre Invitation/ Referral 1:00pm - 3:00pm	Family Stay and Play (We Love Maths) 0-4 years Rebecca Cheetham Children's Centre Booking required 1:00pm - 2:30pm	Family Stay and Play (People Who Help Us) 0-4 years Rebecca Cheetham Children's Centre Booking required 1:00pm - 2:30pm	

Thank you for taking the time to look through our May Half Term Programme. Please ensure you book your space to avoid any disappointments by calling us on: 0208 534 3136. **Please note:** only 2 sessions can be booked throughout the week to enable more families to have the opportunity to join in with the fun. Please remember to cancel your space if you are unable to attend, this will allow more families to attend due to your consideration. All sessions are subject to change. We look forward to seeing you and your little one/s soon.

Health Promotion

Come and join a Health Visiting Health Care Practitioner for one of our advisory sessions in the Children's Centre.

Our next session is taking place on

Accident Prevention

Thursday 6th June from 1:30pm—

BASIC NEEDS ASSISTANCE

Newham Food Alliance For residents who have difficulty accessing food due to financial issues.

www.newham.gov.uk/newhamfoodalliance

Refugee and Migrant Project

<https://www.renewalprogramme.org.uk/Pages/Cat/refugee-and-migrants-project>

Shelter (Housing Support) 0808 800 4444

Our Newham Money offers support to Newham residents who may be struggling with debt or the everyday cost of living. Monday to Friday 9am-5pm

Tel: 020 8430 2041

Email: ournewhammoney@newham.gov.uk

HEALTH AND WELLBEING

Children's Health Visiting, Infant Feeding and Family Nurse Partnership Services
020 3373 9983 For families in Newham

Maternity Support Newham NCT (includes breastfeeding support) and Postnatal depression support

<https://www.nct.org.uk/local-activities-meetsups/region-london/newham>

Newham Mental Health Crisis Helpline
0800 073 0066

Change, Grow and Live (drug and alcohol Support)
0800 652 3879

FAMILY SUPPORT

We know that difficult situations may arise in life. We have a skilled Family Support Team here who may be able to help should you require support with finances, emotions, health, employments, housing and training. To make a self-referral please follow the link below:

<https://azcareportal->

Useful Contacts and Information

SAFEGUARDING AND SAFETY

Newham MASH
0203 373 4600/ 0208 430 2000

Hestia (Newham) Domestic Abuse Support
referralsnewham.dsv@hestia.org
0808 196 1482

Freephone National Domestic Abuse Helpline
0808 2000 247

Childline
0800 1111 or 0808 800 5000

Respect (Men's advice Line)
0808 801 0327/ mensadvice.org.uk

In emergency situations please call 999

FAMILY SUPPORT ARE HERE TO HELP

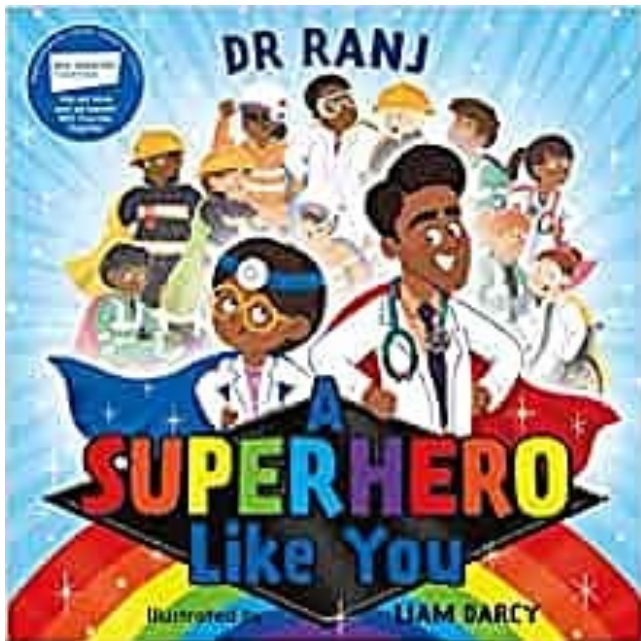
If you require to speak to a member of our Family Support Team about anything affecting your family life, they are ready to see how they can help and support you.

Please feel free to call us on 0208 534 3136

If you would like to make a self-referral into Family Support, you can do this by visiting:
<https://azcareportal-live.newham.gov.uk>

(Please note: you will need to register before making a referral for support). You could also contact Newham MASH on 0203 373 4600 for further guidance.

Book of the Month



We use books to open up a world of learning for our children. The core books we use relate to children's interests and we feed that through the breadth of activities we offer within the provision. We also think that using books as the base for our learning helps children love reading on a deeper level which we hope they will keep with them throughout their education. We will be using books to enhance key messages we want to impart through our whole nursery and children's centre.

This month our book of the month is *A Superhero Like You* written by Dr Ranj and Illustrated by Liam Darcy. This uplifting picture book celebrates key-workers, and shows little readers that we all have the potential within us to be superheroes. Lily knows exactly what she wants to be when she grows up: a superhero! But she's not interested in being a silly superhero. She doesn't want to wear her pants outside her trousers! Lily wants to be a REAL superhero: the kind who helps people and makes the world a better place. Join Lily as she meets the extraordinary superheroes all around us, from doctors, teachers and air ambulance paramedics to scientists, recycling truck drivers and carers.

Here is a link to a reading of the story on youtube:
https://youtu.be/nPdwZrqQm_s?feature=shared

Explore the Parent Sheet <https://www.rebeccacheetham.newham.sch.uk/attachments/download.asp?file=813&type=pdf> to get some ideas on how you can share this story with your child.

IMPORTANT DATES

May 2024

Friday 24th May

-McKee Room—Mudchute Farm

Monday 27th May

-Bank Holiday—Nursery and Children's Centre closed to all

Tuesday 28th May—Friday 31st May

Nursery closed to term time children

June 2024

Tuesday 11th , 12th and 13th June

-Optional educational Visit to Leigh-on-Sea.

Friday 14th June

-Parent Forum—Transitions

Wednesday 19th June

-Sports Day—10:30am and 2:30pm

Friday 28th June

-Fiesta Fun Day 1-5pm (nursery and children's centre closed for formal school, childcare and sessions)

July 2024

Tuesday 9th July

-Leaver's Concert

Wednesday 10th July

-Leaver's Concert

Thursday 11th July

-Leaver's Concert

W/C: Monday 15th July

-Parent Consultations

Wednesday 17th July

-Summer Parties

Friday 19th July

-Last Day of the School Year

Monday 22nd July—Friday 2nd August

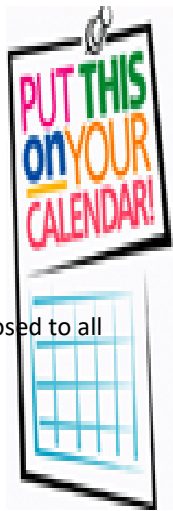
-Nursery and Children's Centre closed to all (2 week closure)

Monday 5th August

School reopens to all year round children

Monday 26th August

- Bank Holiday—Nursery and Children's Centre closed to all





OPEN AFTERNOON

**WEDNESDAY 5TH JUNE 2024
4PM - 5PM**



Come along and let your child interact with our learning environment and staff and secure your place for September 2024.

We have spaces in our 15 hour, 30 hour and extended day provisions, term time and all year round.

Contact us for more information and to book your place!
Marcus Street, London, E15 3JT
Phone us on 0208 534 3136
www.rebeccacheetham.newham.sch.uk

"I appreciate all the efforts and commitments of everyone at Rebecca Cheetham towards the development of my child, it has been a beautiful journey and she is doing absolutely great at Rebecca Cheetham."

SPACES
AVAILABLE
FOR
SEPTEMBER
2024



ENTRY FEE:
DONATION
(INCLUDES DRINK
TOKEN)



FIESTA

Rebecca Cheetham Nursery



and Children's Centre

FUN DAY

THIS IS A CASH EVENT! BRING YOUR GOLD COINS!

JUNK ORCHESTRA
BOUNCY CASTLE
RAFFLE
TOMBOLA
CAKE STALL
BOLLYWOOD / KATTAK WORKSHOPS
FUNFAIR STYLE GAMES
FACE PAINTING
WIGGLY WILD SHOW
AND MUCH, MUCH MORE



FRIDAY
28TH JUNE
2024

1PM - 5PM

VENUE: REBECCA CHEETHAM NURSERY & CHILDREN'S CENTRE
MARCUS STREET, E153JT
0208 534 3136